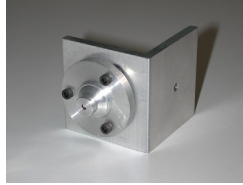


## WLx xxx-xx (MO) LASER Modules Accessories and Special Features

### Accessories

#### WLS-SRF Aluminum Mount

- Available only for the WLS xxx-xx and WLSxxx-xx MO modules.
- Adjustable up to 10 arcsec,  $\pm 3$  deg max. tilt



#### WLS-SRP Plastic Mount

- Available only for the WLSxxx-xx and WLSxxx-xx MO modules.
- Adjustable up to 10 arcsec,  $\pm 3$  deg max. tilt



### Special features

Optional features are available on request for the WLx xxx-xx and WLx xxx-x MO standard LASER modules.

#### -FR - Adjustable Focus

- Available only for the WLSxxx-xx and WLSxxx-xx MO modules.
- Adjustable from 30 mm to 7 deg of divergence

#### -Fn - Fixed Focus

- n is the focal distance, factory adjusted from 100 to 1000 mm

#### -OD1.2 - Diaphragm

- Standard  $\varnothing 1.2$  mm diaphragm
- Other diameters ranging from  $\varnothing 0.1$  to  $\varnothing 4.0$  mm are available on request

#### -3V - 3V Power Supply

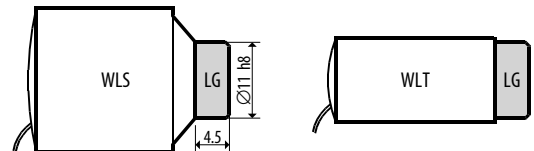
- Reverse power supply protection is absent

#### -PA - External Power Adjust

- External output power adjustment

#### -LG - Line Generator

- Factory assembled in front of a standard module
- Line angle approximately 50 deg



### Accessories ordering codes

WLS-SRF	Aluminum mount
WLS-SRP	Plastic mount

### Special features ordering codes

-FR	Adjustable focus
-Fn	Fixed focus
-OD1.2	$\varnothing 1.2$ mm diaphragm
-3V	3V power supply
-PA	External output power adjustment
-LG	Line generator

### Exemples

WLS650-1-F500	$\varnothing 19 \times 22$ mm, 650 nm, 1 mW, focused at 0.5 m
WLS650-1-LG	$\varnothing 19 \times 22$ mm, 650 nm, 1 mW, with line generator
WLS650-1-LG-PA	$\varnothing 19 \times 22$ mm, 650 nm, 1 mW, with line generator and output power adjustment